



IC "Spedalieri - Castiglione" Bronte

REGOLE PER GLI INGRESSI



Dirigente Prof.ssa Biagia Avellina



IC "Spedalieri - Castiglione" Bronte

INGRESSI ESTERNI





IC "Spedalieri - Castiglione" Bronte

CANCELLI



C1



C2



C4



C3



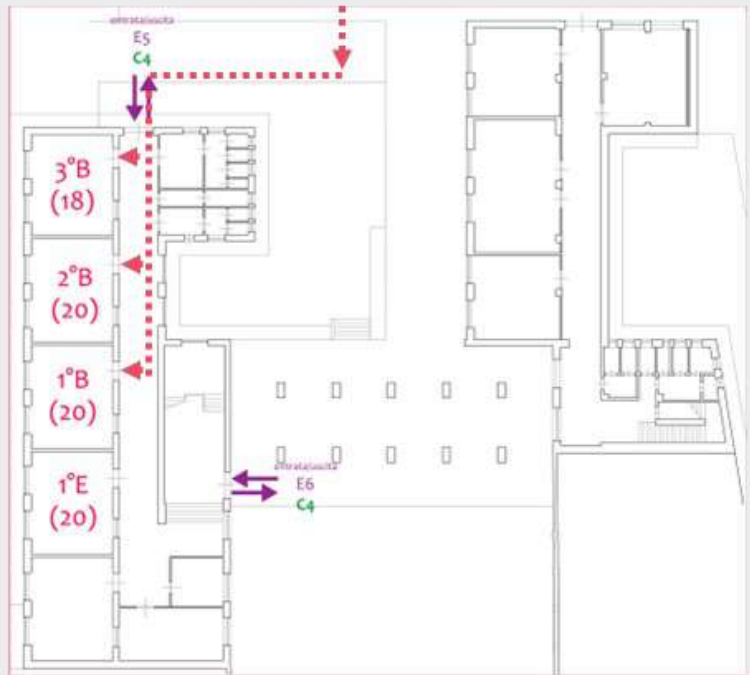


IC "Spedalieri - Castiglione" Bronte

PIANO TERRA



1°B – 2°B – 3°B





IC "Spedalieri - Castiglione" Bronte

PIANO TERRA

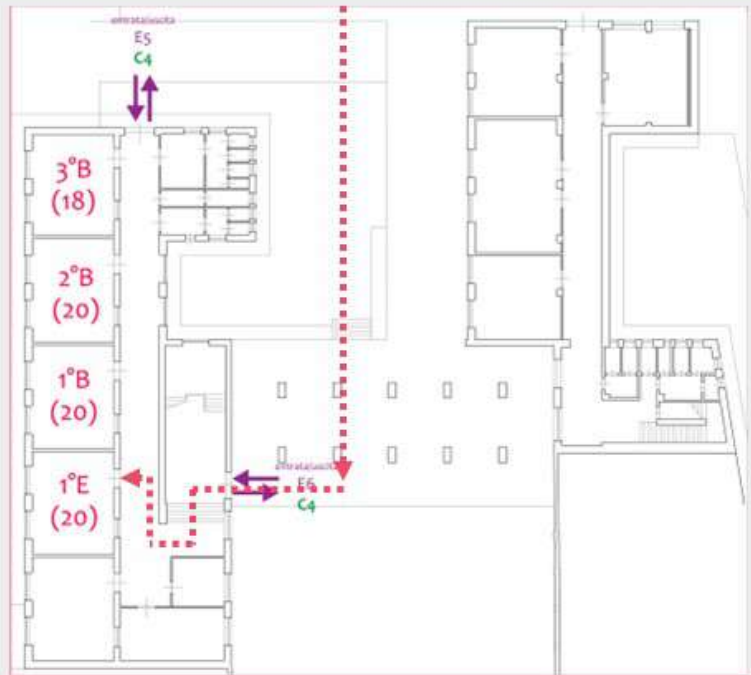


C4

1°E



E6





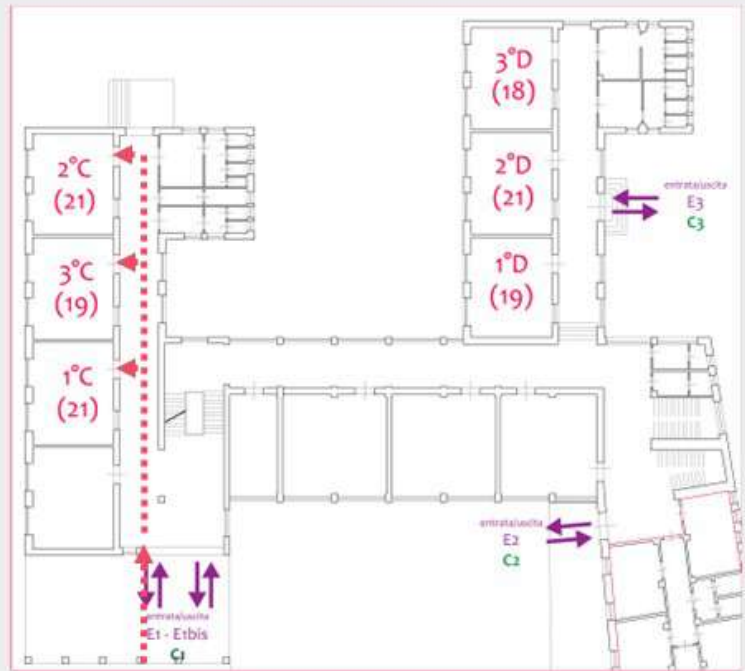
IC "Spedalieri - Castiglione" Bronte

PIANO PRIMO



C1

1°C - 2°C - 3°C





IC "Spedalieri - Castiglione" Bronte

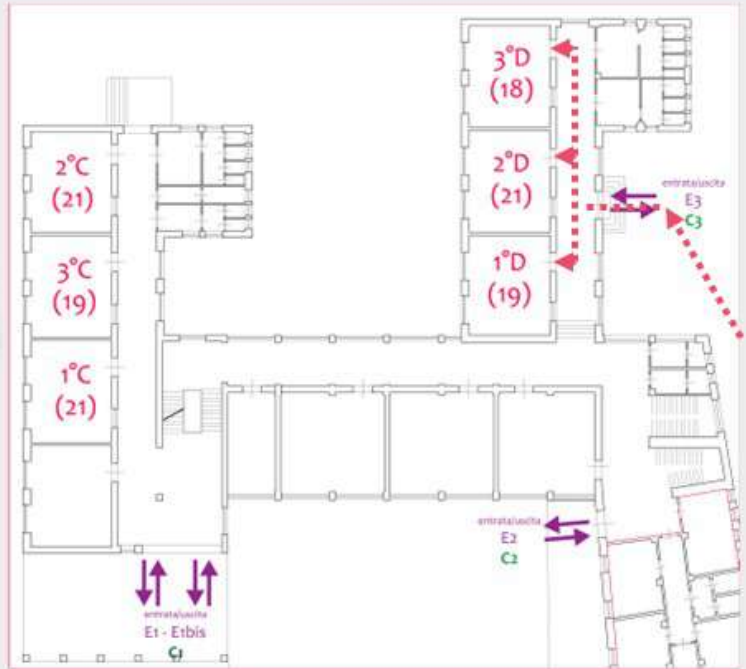
PIANO PRIMO



C3

1°D - 2°D - 3°D

E3



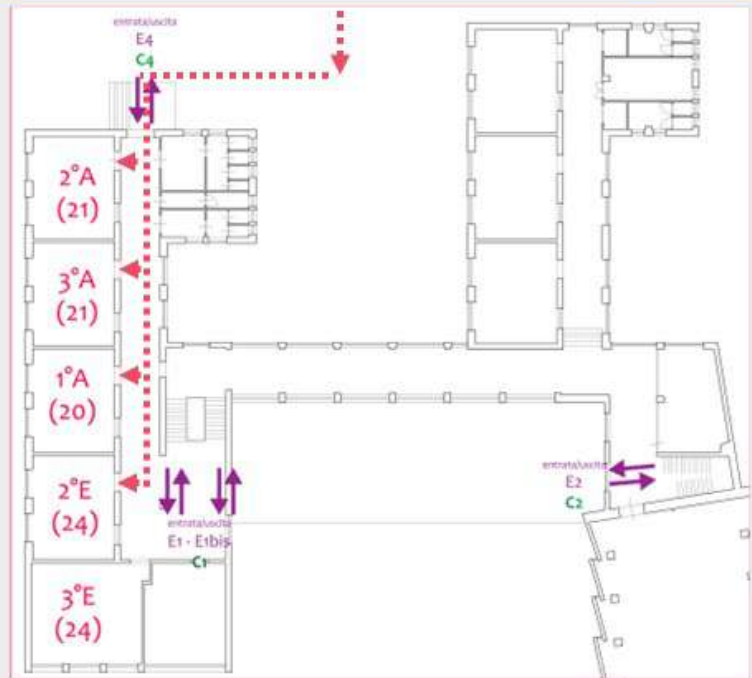


IC "Spedalieri - Castiglione" Bronte

PIANO SECONDO



1°A - 2°A - 3°A - 2°E





IC "Spedalieri - Castiglione" Bronte

PIANO SECONDO



C1

3°E



E1

